



www.AtoZtheWorld.com

THE WORLD AWAITS

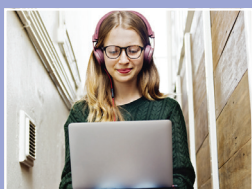
Curious about the world? *AtoZ the World* has you covered. With *AtoZ the World*, information about world history, cultures, languages, foods, religions, and much more is just a click away. With 174 Country Culture Guides covering more than 60 topics each, *AtoZ the World* offers a breadth and depth of content that is unmatched by any other single resource. What will you learn today?



COUNTRY CULTURE



HISTORY



LANGUAGE



GLOBAL TRAVEL



EDUCATION

BENEFITS

- *AtoZ the World* serves as a key resource for academic institutions with programs in international and cross-cultural studies, international business, the social sciences, women's studies, language studies, and study abroad programs.
- *AtoZ the World* provides teachers with a comprehensive resource for lesson plans and class activities.
- Students use *AtoZ the World* as a one-stop research resource for country reports, projects, and presentations.
- Libraries benefit from *AtoZ the World's* ease of use and relevance to diverse patron populations.

All *AtoZ the World* content is mobile friendly, automatically adapting to the screen size of any desktop, laptop, tablet, or smartphone.



www.AtoZtheWorld.com



Sample Pages

Austria

Home Q Search About Contact Sign Out

Select another Country

Spoken Languages

Austrian German is the official language of Austria and is used in government, education, business, and the media. Alemannic is spoken in Vorarlberg, while various dialects of Austro-Bavarian are spoken in the surrounding area. Because these dialects are significantly different from standard German, they are not intelligible to standard German speakers.

Various minority languages are spoken in select communities, including Turkish (2 percent), Serbian (2 percent), Croatian, Czech, Hungarian, Slovak, Slovene, and Romani.

German

German / Deutsch

Hallo
(Hello)

German Quick Facts

- Origin: Central and Northern Europe
- Native Speakers: 90-95 million
- Second-language Speakers: 85-110 million
- Official Language: Austria, Belgium, Germany (de facto), Liechtenstein, Luxembourg, Switzerland
- Recognized Language: Brazil

History and Evolution

As a West Germanic, Indo-European language, German is related to Dutch, English, Luxembourgish, and the languages of Scandinavia. During the first millennium CE, the West Germanic dialect of Old Saxon underwent a phonological (sound) change called the High German Consonant Shift, which led to the emergence of Old High German, the predecessor to the modern variety.

Angola

Home Q Search About Contact Sign Out

Select another Country

Decision Making

Cultural Context

Patience and persistence will be requirements when doing business in Angola. The majority of Angolan business deals are dependent on many layers of bureaucracy and hierarchy, so foreign businesspeople who do not have the time or resources to return to Angola often may want to reconsider doing business in this country. Most Angolan companies, both government agencies and privately owned entities, are influenced by politics, as the Angolan government has played a major role in commercial and business endeavors for decades. Another reason for the slow decision-making process is the extensive relationship-building phase that is simply a standard part of business dealings in Angola.

Rather than try to fight the system, business visitors will be more successful by developing friendly relationships with not only their Angolan company contacts, but also with local government officials. If you feel it is too difficult to make an inside government contact, look for local partners who have reliable reputations and connections. These relationships may be able to assist you in closing the deal with an Angolan company, or help you collect delayed payments or delivery of services should arrangements go awry.

Power Structures

Most Angolan businesses are set up as hierarchies with the majority of decisions coming from the top. However, most Angolans will solicit opinions from others to make the most informed decision about a matter. Angolans are also pretty open about their opinions, as well as why they are making particular decisions. Most decisions will be determined by your personal relationship with an Angolan decision maker.

Sweden

Home Q Search About Contact Sign Out

Select another Country

Country Snapshot

The Land

Sweden is located in northern Europe on the Scandinavian Peninsula. Higher latitudes are densely forested and the northernmost part of the country lies above the Arctic Circle, much of the population therefore resides in the south of the country. Sweden was heavily glaciated in the last ice age and over 85,000 freshwater lakes, formed during the retreat of the ice sheet, are scattered across the country. The western border with Norway is mountainous and rises to a maximum height of 2,111 meters (6,926 ft) in the Lapland region. The mountains are snow covered throughout the year and contain a number of large glaciers.

The eastern side of the country has a long coastline along the Baltic Sea and the Gulf of Bothnia. Due to the cold climate, the sea can be frozen for up to five months of the year and icebreakers are needed to ensure ships can navigate the waters. Gotland and Öland, the country's two largest islands, have a very distinct culture from mainland Sweden.

The People

The Swedish ethnic majority is combined with small communities of Finns and Sami people in the far north. The Finns, who comprise about 5 percent of the population, are largely based along the northern border with Finland and can trace their origins in the region back to the period when the two countries formed a single empire.

Swedish is the national language, but the country also recognizes five official minority languages, namely Sami, Meänkieli, Finnish, Romani Chib, and Yiddish. Finnish has the status of co-official language in provinces where large communities of Finns reside. Sami has a similar status in the far northern regions of Lapland.

Sweden has one of the world's highest numbers of athletes, and most Swedes do not practice a religion. However, 78 percent of the population declares itself to belong to the Church of Sweden. Other Christian denominations exist, as well as small communities of Muslims, Buddhists, Bahá'í, and Jews following immigration.

History

Sweden can date its human history back to 12,000 BCE, when hunter-gatherer people occupied the land. Much of the exact history of the settlement of the land that followed

Myanmar

Home Q Search About Contact Sign Out

Select another Country

Points of Interest

Architectural Landmarks

Mandalay Palace

(မန္တလေး အနောက်)

Mandalay Myanmar
This 19th-century palace in the city center, also known as the Great Golden Royal Palace, was built for King Mintun. The eight-meter-high (26 feet) brick-walled fort in which it is located and the 70-meter (230 feet) moat around it were built before the arrival of the British in 1857. The square fortress, with two-meter-thick (6.5 feet) walls, measures two kilometers (over a mile) on each side. The original teakwood palace was destroyed during World War II but later replicated and rebuilt with its original features. The most remarkable for the goldfish in houses. The Mandalay Palace is a major tourist attraction in Myanmar.

Thaniwin Bridge

(တံတားတော်)

Mon State
Mawlamyine Myanmar
The Thaniwin Bridge in Mon State connects the capital Mawlamyine to Mottama town and is the longest bridge in Myanmar. Designed by local engineers of the Ministry of Construction, the bridge was built in six years and opened in 2006, two years ahead of the projected completion date. It is 2,347 meters (7,699 feet) long and has a 3.5-kilometer-long (2.2 miles) motor bridge with a two-lane motorway, a rail track, and two sidewalks.

Cultural Sites

Mandalay Marionettes Theater

Overview: Country Snapshot

Language: Spoken Languages



Points of Interest

Business: Decision Making



Country Guides

174 Featured Countries

Afghanistan
Albania
Algeria
Angola
Argentina
Armenia
Australia
Austria
Azerbaijan
Bahamas
Bahrain
Bangladesh
Belarus
Belgium
Belize
Benin
Bermuda
Bolivia
Bosnia and Herzegovina
Botswana
Brazil
Brunei
Bulgaria
Burkina Faso
Burundi
Cambodia
Cameroon
Canada
Central African Republic
Chad
Chile
China
Colombia
Comoros
Congo (DRC)
Costa Rica
Côte d'Ivoire
Croatia
Cuba
Cyprus
Czech Republic
Denmark
Djibouti
Dominican Republic

Ecuador
Egypt
El Salvador
Equatorial Guinea
Eritrea
Estonia
Ethiopia
Fiji
Finland
France
French Guiana
Gabon
Gambia, The
Georgia
Germany
Ghana
Greece
Guam
Guatemala
Guinea
Guinea-Bissau
Guyana
Haiti
Honduras
Hong Kong
Hungary
Iceland
India
Indonesia
Iran
Iraq
Ireland
Israel
Italy
Jamaica
Japan
Jordan
Kazakhstan
Kenya
Kosovo
Kuwait
Kyrgyzstan
Laos

Latvia
Lebanon
Lesotho
Liberia
Libya
Lithuania
Luxembourg
Macau
Macedonia
Madagascar
Malawi
Malaysia
Maldives
Mali
Malta
Mauritania
Mauritius
Mexico
Moldova
Mongolia
Montenegro
Morocco
Mozambique
Myanmar
Namibia
Nepal
Netherlands
New Zealand
Nicaragua
Niger
Nigeria
North Korea
Norway
Oman
Pakistan
Panama
Papua New Guinea
Paraguay
Peru
Philippines
Poland
Portugal
Qatar

Romania
Russia
Rwanda
Saudi Arabia
Senegal
Serbia
Sierra Leone
Singapore
Slovakia
Slovenia
Solomon Islands
Somalia
South Africa
South Korea
Spain
Sri Lanka
Sudan
Suriname
Swaziland
Sweden
Switzerland
Syria
Taiwan
Tajikistan
Tanzania
Thailand
Togo
Trinidad and Tobago
Tunisia
Turkey
Turkmenistan
Uganda
Ukraine
United Arab Emirates
United Kingdom
United States
Uruguay
Uzbekistan
Venezuela
Vietnam
Western Sahara
Yemen
Zambia
Zimbabwe





Country Guides

Features for Each Country

OVERVIEWS

Country Snapshot
Country Facts

BUSINESS

The Business Experience
Decision Making
Meetings
Negotiating
Entertaining
Attire
Businesswomen
Business Workweek

CLIMATE & WEATHER

Climate

COMMUNICATIONS

Dialing Guide
Cell Phones
Emergency Numbers
Internet Access
Postal Service

COUNTRY PROFILE

Demographic Summary
Economy and Trade
Geography
Government Leaders
The People

CROSSWORD PUZZLES

Crossword Puzzles

CULTURE & SOCIETY

Gift Giving
Greetings and Courtesies
Sports
Stereotypes
Superstitions & Folklore
Time Orientation
Women in Business
Women in Culture

EDUCATION

Structure
UN-Based Statistics
International Schools
Higher Education

EMBASSIES AND CONSULATES

...in Country of Other Nations
...of Country Abroad

FOOD AND RECIPES

National Cuisine
Recipes

HEALTH AND MEDICAL

Disease Risks and Prevention
Health Advisories
Health Care System
Immunization
Insurance and Med-evac
Directory of Health Services

HISTORIC FAMOUS PEOPLE

Historic Famous People

HISTORY

Historical Timeline
Vintage Postcards
Antique Maps

HOLIDAYS AND FESTIVALS

Holidays and Festivals

HUMAN RIGHTS

Human Rights Reports 2010–14

LANGUAGE

Spoken Languages
Video Dictionary
Proverbs

LANGUAGE GLOSSARIES

Essential Terms
Countries and Capitals
Numbers
Professions
Travel General
Travel Items
Travel Services

LIFE CYCLES

Birth
Childhood
Coming of Age
Dating and Courtship
Marriage
Family and Parenting
Work and Professional Life
Old Age
Death

MAPS

Maps (9 Thematic)

MEDIA OUTLETS

Newspapers
Television Stations
Radio Stations
Periodicals

MONEY AND BANKING

Currency
Banknote Images
Coin Images
Major Banks
Currency Converter

MUSIC

Music

NAMES

Name Structure
Surnames (Family Names)

NATIONAL SYMBOLS

National Anthem
National Bird
National Day
Flag Images
Flag Details
National Flower

NEWS FEEDS

Top Stories
Business
Crime
Environment
Finance
Politics
Science
Technology

POINTS OF INTEREST

Points of Interest

RELIGION

Religion
Religious Freedom 2010–14

SECURITY BRIEFING

Security Assessment
Travel Warnings
Threats to Safety & Security
Crime
Money & Valuables
Transportation Safety
Local Laws

